

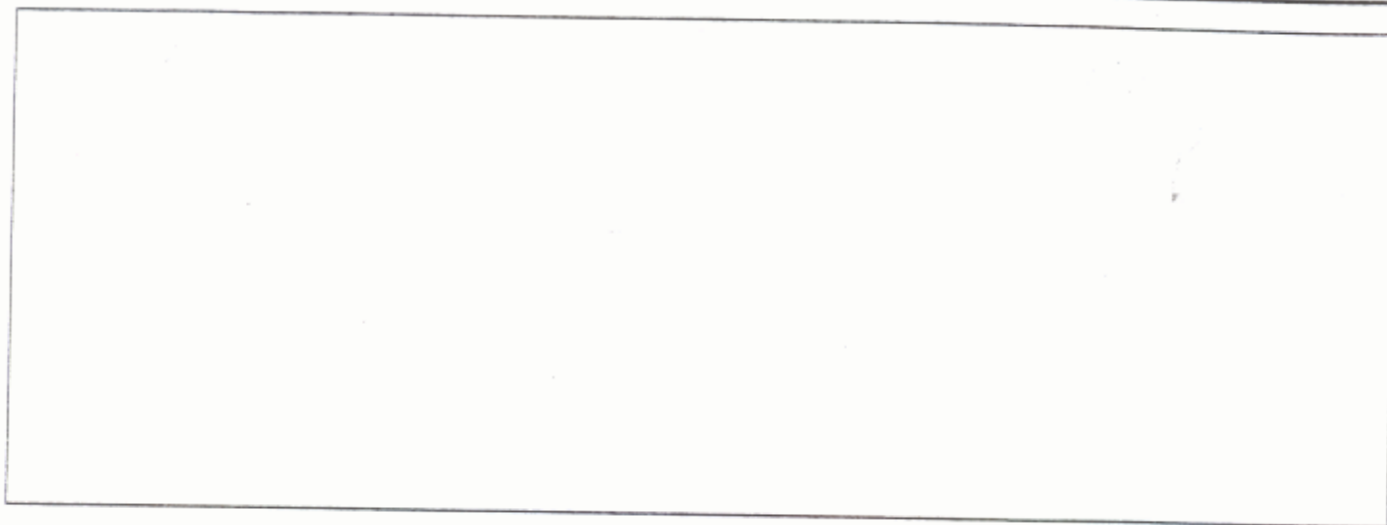


INSTRUCTION MANUAL

MVM

Millivolt Meter Module

101-701-00 (OBS)



THE MOORE INDUSTRIES MILLIVOLT METER MODULE (MODEL MVM) AND THE CALIBRATION MODULE (MODEL GMC) ARE PLUG-IN PRINTED CIRCUIT CARDS THAT BECOME PART OF THE PROCESS CONTROL ELECTRONICS FOR THE K-1000 LEVEL SYSTEM MANUFACTURED BY KAMYR, INCORPORATED, FOR DETAILED CIRCUIT DESCRIPTION AND SCHEMATIC DIAGRAMS, CONTACT THE KAMYR CORPORATION AT THE FOLLOWING ADDRESS:

KAMYR INCORPORATED
GLENS FALLS NEW YORK 12801
CABLE: KAMYR-INC.
TELEX: 145474
TELEPHONE: (518) 793-5111

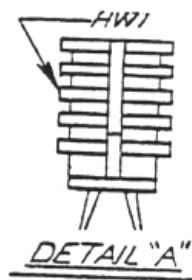
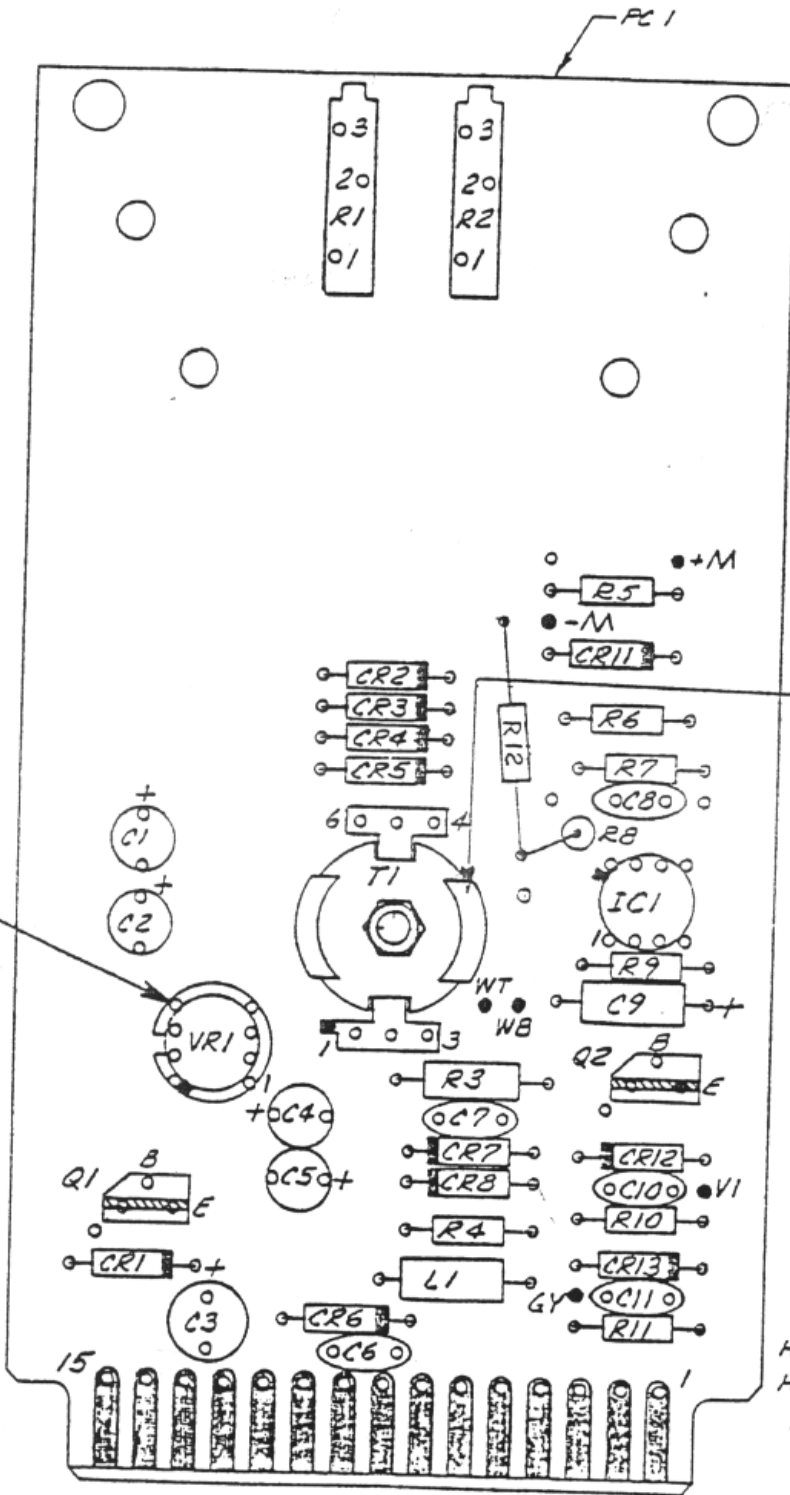
MOORE INDUSTRIES
 18650 Schoenborn Street
 Sepulveda, California 91343

TOLERANCES
 UNLESS NOTED
 .X ±.1
 .XX ±.03
 .XXX ±.010
 ANGLES ±30°

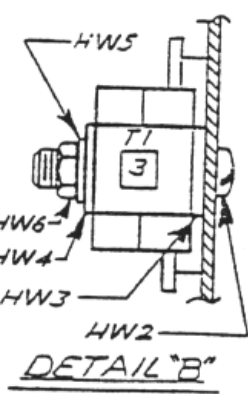
DATE: GARRETT 7-26-74
 CHECKED: T. HART 7/27/74
 ENGINEER: M. L. Smith 7/27/74
 SCALE: 2-1

**PLUG-IN
 MVM**

101-551-00 | C
 CATEGORY: P.C. ASSEMBLY
 REVISED BY: E.C.O G300 | DATE: 2/1/87 | BY: JAD | APPROVAL: [Signature]



SEE DETAIL "B"
 3



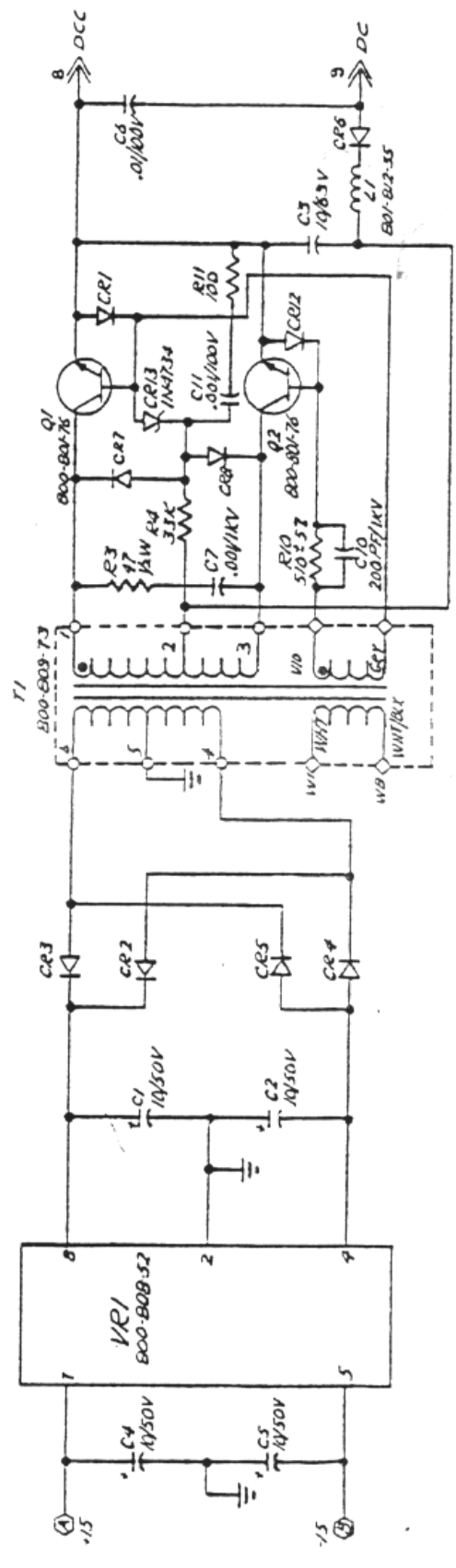
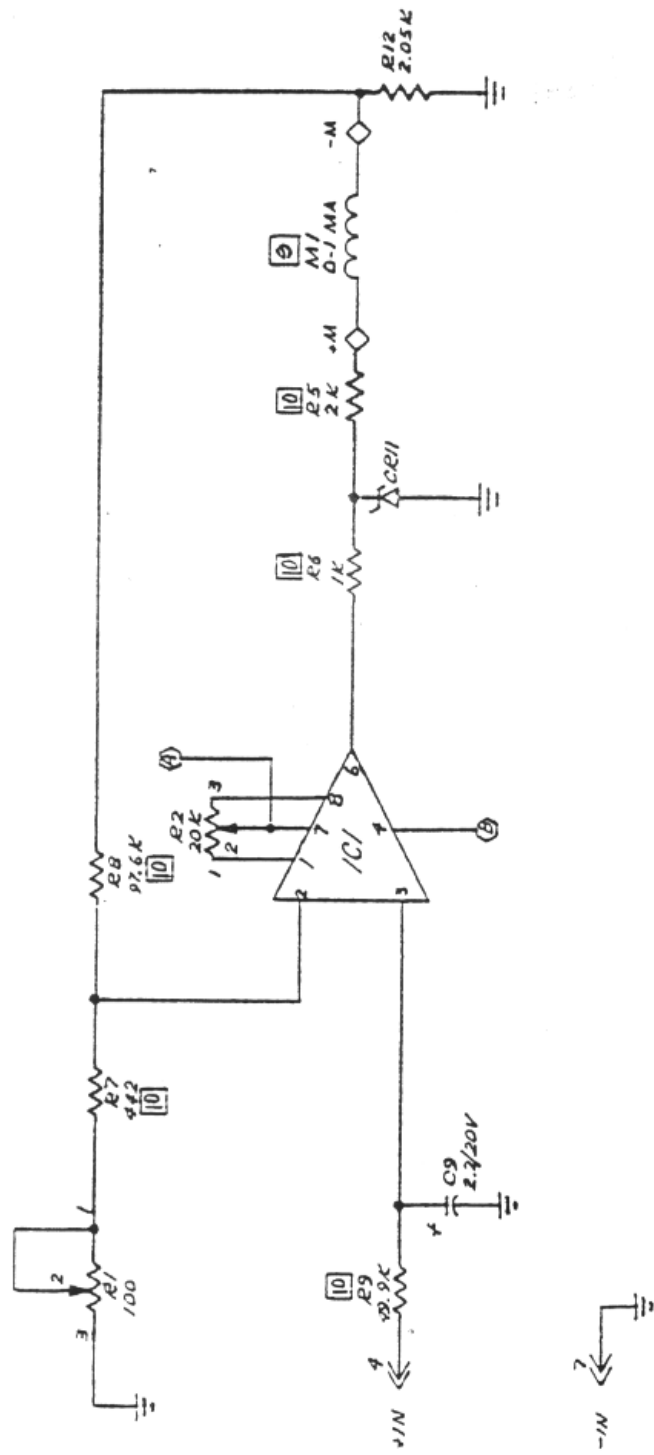
101-551-0
 P1 MVM

3. DO NOT OVER-TIGHTEN SCREW, EXCESSIVE PRESSURE MAY BREAK POT CORE.
2. ALL LEADS MUST BE SOLDERED TO PADS.
1. JUMPERS ARE 22 AWG, TEFLON SLEEVED, AS REQ'D.

DO NOT SCALE DRAWING		
TOLERANCES UNLESS NOTED	DRAWN GARRETT	7-26-76
.X ±.1	CHECKED T. HART	7/27/76
.XX ±.03	ENGINEER <i>T. R. Lytle</i>	7/28/76
.XXX ±.010	SCALE	
ANGLES ±30'		

PLUG-IN
 MVM

DRAWING NUMBER	101-451-00
CATEGORY	SCHEMATIC
REVISED BY	EDD 3276
DATE	7/27/76
BY	G.T.



METAL FILM RESISTORS, 1% TOLERANCE.
 ITEM NOT MOUNTED ON PC BOARD.
 ELECTRICAL COMMONS (SAME LETTERS) DO NOT APPEAR ON PC BOARDS OR ASSY DRAWINGS.
 CIRCUIT COMMON (GROUND).
 SEE LIST OF MATERIALS FOR VALUE, PART NUMBER AND/OR USAGE.
 TEST POINT, FILLED END IS POSITIVE. SEE SECTION 5 OF MANUAL "MAINTENANCE".
 DIODES ARE IN-1981 RESISTORS ARE V+W. CARB. COMB. ±10%.
 POTENTIOMETERS INCREASE C.W. FROM 170.3.

RETURN PROCEDURES

To return equipment to Moore Industries for repair, follow these four steps:

1. Call Moore Industries and request a Returned Material Authorization (RMA) number.

Warranty Repair –

If you are unsure if your unit is still under warranty, we can use the unit's serial number to verify the warranty status for you over the phone. Be sure to include the RMA number on all documentation.

Non-Warranty Repair –

If your unit is out of warranty, be prepared to give us a Purchase Order number when you call. In most cases, we will be able to quote you the repair costs at that time. The repair price you are quoted will be a "Not To Exceed" price, which means that the actual repair costs may be less than the quote. Be sure to include the RMA number on all documentation.

2. Provide us with the following documentation:
 - a) A note listing the symptoms that indicate the unit needs repair
 - b) Complete shipping information for return of the equipment after repair
 - c) The name and phone number of the person to contact if questions arise at the factory
3. Use sufficient packing material and carefully pack the equipment in a sturdy shipping container.
4. Ship the equipment to the Moore Industries location nearest you.

The returned equipment will be inspected and tested at the factory. A Moore Industries representative will contact the person designated on your documentation if more information is needed. The repaired equipment, or its replacement, will be returned to you in accordance with the shipping instructions furnished in your documentation.

WARRANTY DISCLAIMER

THE COMPANY MAKES NO EXPRESS, IMPLIED OR STATUTORY WARRANTIES (INCLUDING ANY WARRANTY OF MERCHANTABILITY OR OF FITNESS FOR A PARTICULAR PURPOSE) WITH RESPECT TO ANY GOODS OR SERVICES SOLD BY THE COMPANY. THE COMPANY DISCLAIMS ALL WARRANTIES ARISING FROM ANY COURSE OF DEALING OR TRADE USAGE, AND ANY BUYER OF GOODS OR SERVICES FROM THE COMPANY ACKNOWLEDGES THAT THERE ARE NO WARRANTIES IMPLIED BY CUSTOM OR USAGE IN THE TRADE OF THE BUYER AND OF THE COMPANY, AND THAT ANY PRIOR DEALINGS OF THE BUYER WITH THE COMPANY DO NOT IMPLY THAT THE COMPANY WARRANTS THE GOODS OR SERVICES IN ANY WAY.

ANY BUYER OF GOODS OR SERVICES FROM THE COMPANY AGREES WITH THE COMPANY THAT THE SOLE AND EXCLUSIVE REMEDIES FOR BREACH OF ANY WARRANTY CONCERNING THE GOODS OR SERVICES SHALL BE FOR THE COMPANY, AT ITS OPTION, TO REPAIR OR REPLACE THE GOODS OR SERVICES OR REFUND THE PURCHASE PRICE. THE COMPANY SHALL IN NO EVENT BE LIABLE FOR ANY CONSEQUENTIAL OR INCIDENTAL DAMAGES EVEN IF THE COMPANY FAILS IN ANY ATTEMPT TO REMEDY DEFECTS IN THE GOODS OR SERVICES. BUT IN SUCH CASE THE BUYER SHALL BE ENTITLED TO NO MORE THAN A REFUND OF ALL MONIES PAID TO THE COMPANY BY THE BUYER FOR PURCHASE OF THE GOODS OR SERVICES.

ANY CAUSE OF ACTION FOR BREACH OF ANY WARRANTY BY THE COMPANY SHALL BE BARRED UNLESS THE COMPANY RECEIVES FROM THE BUYER A WRITTEN NOTICE OF THE ALLEGED DEFECT OR BREACH WITHIN TEN DAYS FROM THE EARLIEST DATE ON WHICH THE BUYER COULD REASONABLY HAVE DISCOVERED THE ALLEGED DEFECT OR BREACH, AND NO ACTION FOR THE BREACH OF ANY WARRANTY SHALL BE COMMENCED BY THE BUYER ANY LATER THAN TWELVE MONTHS FROM THE EARLIEST DATE ON WHICH THE BUYER COULD REASONABLY HAVE DISCOVERED THE ALLEGED DEFECT OR BREACH.

RETURN POLICY

For a period of thirty-six (36) months from the date of shipment, and under normal conditions of use and service, Moore Industries ("The Company") will at its option replace, repair or refund the purchase price for any of its manufactured products found, upon return to the Company (transportation charges prepaid and otherwise in accordance with the return procedures established by The Company), to be defective in material or workmanship. This policy extends to the original Buyer only and not to Buyer's customers or the users of Buyer's products, unless Buyer is an engineering contractor in which case the policy shall extend to Buyer's immediate customer only. This policy shall not apply if the product has been subject to alteration, misuse, accident, neglect or improper application, installation, or operation. THE COMPANY SHALL IN NO EVENT BE LIABLE FOR ANY INCIDENTAL OR CONSEQUENTIAL DAMAGES.



WORLDWIDE • www.miinet.com

United States • info@miinet.com Tel: (818) 894-7111 • FAX: (818) 891-2816	Belgium • info@mooreind.be Tel: 03/448.10.18 • FAX: 03/440.17.97	China • sales@mooreind.sh.cn Tel: 86-21-62491499 • FAX: 86-21-62490635
Australia • sales@mooreind.com.au Tel: (02) 8536-7200 • FAX: (02) 9525-7296	The Netherlands • sales@mooreind.nl Tel: (0)344-617971 • FAX: (0)344-615920	United Kingdom • sales@mooreind.com Tel: 01293 514488 • FAX: 01293 536852