

May 2017

Description

The TMZ PC-Programmable MODBUS Temperature Transmitter and Signal Converter accepts a direct signal input from a wide array of sensors and analog devices:

RTD • Thermocouple • Current • Voltage

Millivolt • Ohms • Resistance • Potentiometer

Analog-to-MODBUS Conversion

The 4-wire (line/mains-powered) TMZ converts the inputs to the standard MODBUS RTU (RS-485) communication protocol ready for direct interface with MODBUS-based monitoring and control systems.

Save Wiring and Installation Costs

When monitoring points are dispersed, or in small clusters, the TMZ is the ideal solution for collecting and concentrating them onto a single MODBUS RTU communication link.

Up to 32 TMZs can be multidropped onto a single low-cost communication link (such as a twisted wire pair). This eliminates the need to run a dedicated wire for each signal, and delivers significant savings on installation, cable, conduit, connection and wire tray costs.

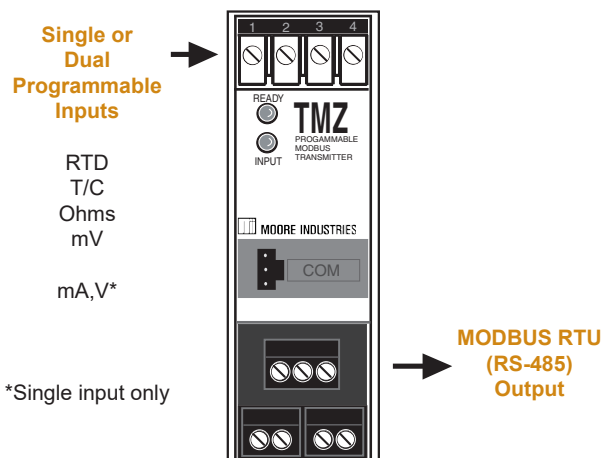


The TMZ and TMZ Dual feature a metal, RFI resistant housing that snaps onto standard DIN-style rails.

Features

- **20-bit input resolution delivers exceptional digital measurement accuracy.** The TMZ delivers accuracy of $\pm 0.1^\circ\text{C}$ ($\pm 0.18^\circ\text{C}$) with all platinum RTDs, or $\pm 0.01\%$ of maximum span with current and voltage inputs.
- **Output error is eliminated.** Since the measurement is delivered to your control system as a digital signal, the output error produced by a traditional analog transmitter is eliminated.
- **Increase density and reduce costs.** 2TPRG Input model allows dual RTD, thermocouple, mV, resistance or potentiometer inputs doubling your temperature monitoring capability in a single unit.
- **PC-programmable with Windows® software.** From a single screen, you can choose, and then view to confirm, all of your application specific operating parameters from a PC.
- **Long-term stability.** Allows up to 5 years between scheduled calibrations.
- **Isolated and RFI/EMI protection.** Delivers superior protection against the effects of ground loops, plant noise, radio frequency and electromagnetic interference.

Figure 1. Available TMZ models deliver versatile input and output options.



Certifications



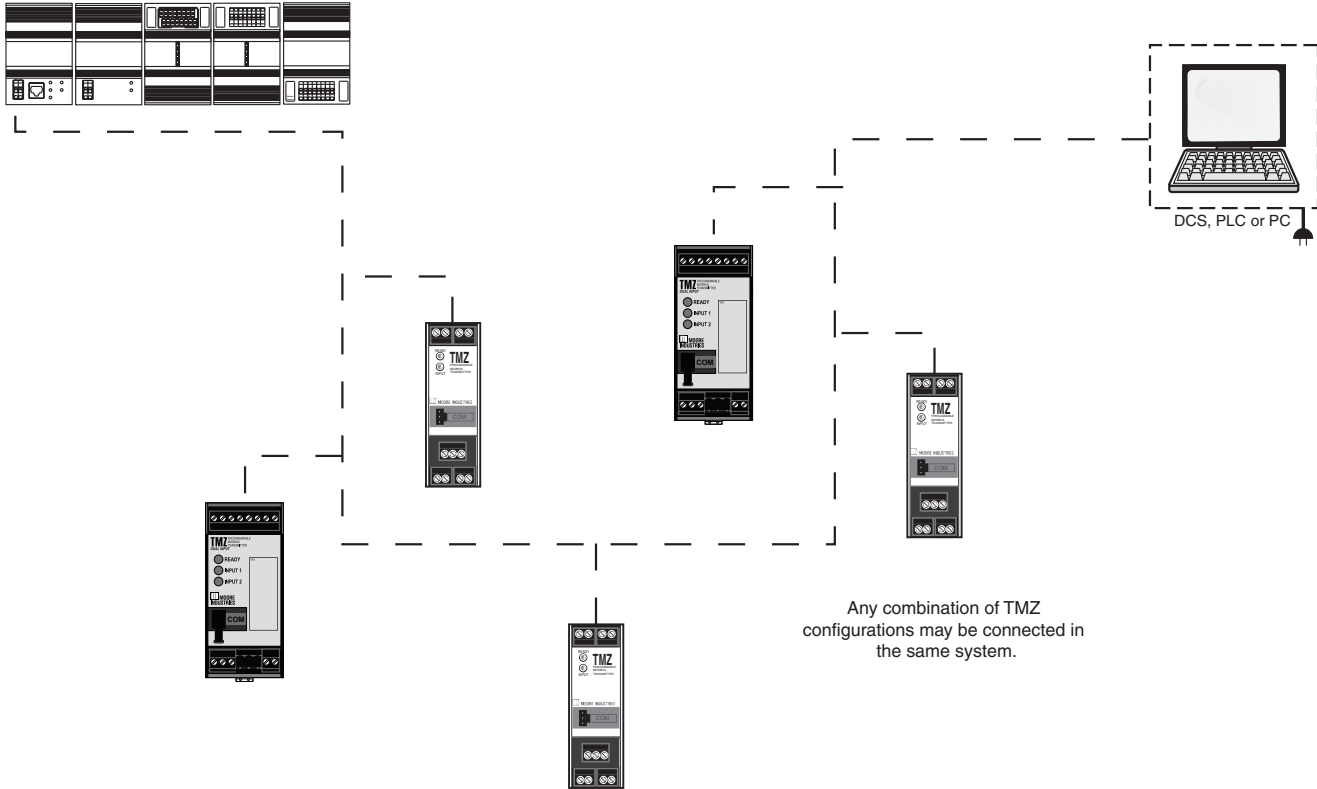
CE Conformant – EMC Directive 2014/30/EU – EN 61326

TMZ

PC-Programmable MODBUS Temperature Transmitter and Signal Converter

Figure 2. Up to 32 TMZs, without repeaters, can be multidropped onto a single MODBUS RTU communication link.

The TMZ can be installed on the same data link with standard MODBUS RTU devices including Moore Industries' NCS NET Concentrator[®] Process Control and Distributed I/O System (shown below).



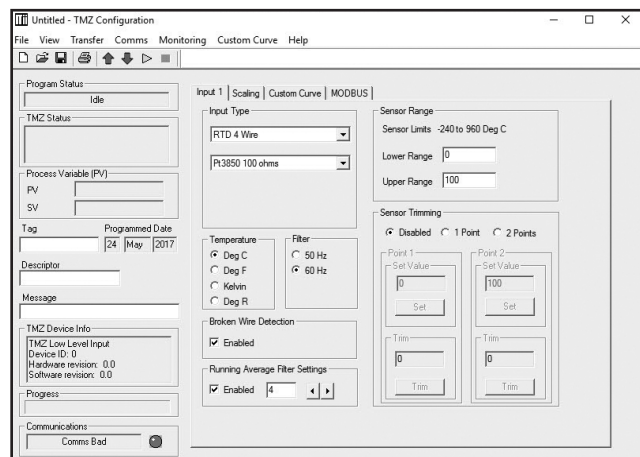
One Window. One Minute. One Setup.

All operating parameters configure quickly and easily using our Intelligent PC Configuration Software.

Programmable functions include:

- Input type and measurement range (zero and full scale values)
- Input trimming
- MODBUS parameters
- T/C reference junction compensation (on/off)
- Standard and custom linearization curves

Figure 3. The TMZ programs quickly and easily from a single software window.

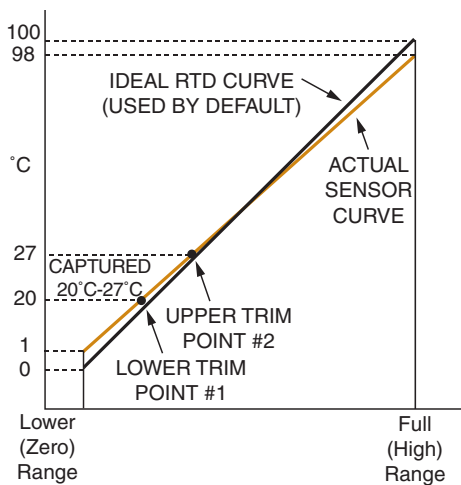


Trim to Specific Curve Segments

The TMZ can be trimmed with two data points within the selected zero and span measurement range. This allows a complete process range to be monitored, while placing measurement emphasis on a critical segment of the range.

In the figure below, the ideal RTD curve is optimized between 20°C and 27°C to match the curve of the sensor used. This provides incredible precision over a limited portion of the span, while measuring the remainder of the span with outstanding accuracy.

Figure 4. The TMZ can be set to measure the segment most critical to the process.



Total Sensor Diagnostics for RTD Inputs

If an RTD input breaks, the user can view plain-English error messages on the PC software that identifies exactly which RTD wire has broken. These specific error messages eliminate the work of removing the sensor or checking all lead wires to diagnose a problem.

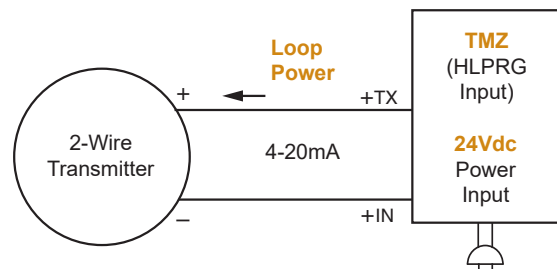
Monitor Two Inputs

With the 2TPRG model, you monitor and configure two independent sensor inputs (RTD, thermocouple, mV, resistance or potentiometer). Data from both sensors is available on the MODBUS output where the host can use the data for averaging, differential or sensor backup.

Powers a 2-Wire Transmitter

The TMZ (HLPRG: current/voltage input model) comes standard with 2-wire transmitter excitation that provides 24Vdc to power the loop. This saves the cost of specifying and installing an additional instrument power supply.

Figure 5. The TMZ provides transmitter excitation to power a 2-wire transmitter.

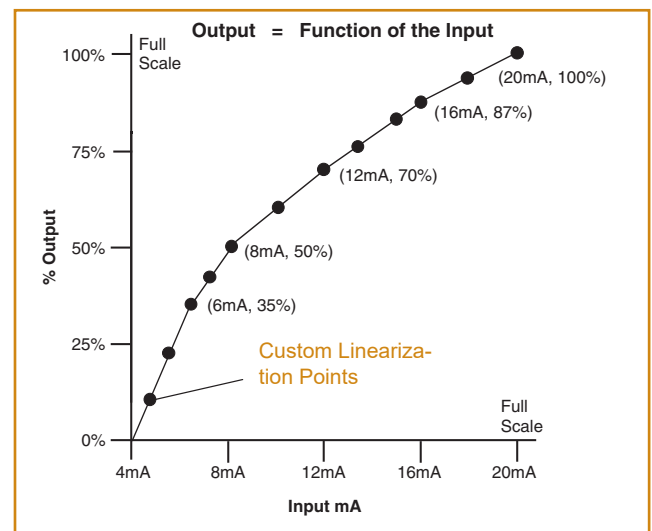


Custom 128-Point Linearization Curves

The ability to plot a custom linearization curve is beneficial when non-linear input signals must be converted to linear output representations. Typical applications include monitoring a non-linear transducer, the level of odd-shaped tanks, and flow meter linearization*.

*Custom curve functionality is not available for 2TPRG models.

Figure 6. Custom linearization points can be selected and saved in the TMZ's memory to compensate for non-linear input signals.



Specifications (HLPRG: mA and V Input Model)

<p>Performance</p> <p>Input Accuracy: Current, $\pm 0.01\%$ of maximum span (± 2 microamps); Voltage, $\pm 0.01\%$ of maximum span ($\pm 1\text{mV}$)</p> <p>Overall Accuracy: The overall accuracy of the unit is the input accuracy. It includes the combined effects of linearity, hysteresis, repeatability and adjustment resolution.</p> <p>Stability: See Table 1</p> <p>Response Time: INPUT UPDATE TIME: 128msec; MODBUS POLLING TIME: Dependent upon how fast and how often a MODBUS master requests data</p> <p>Isolation: STANDARD UNIT: 1000Vrms between case and input. 500Vrms between input to MODBUS and power to MODBUS. 1500Vrms between power and input; WITH -RF OPTION: 500Vrms between case, input and power</p> <p>Power Supply: 9-30Vdc Power Consumption: 1W maximum</p> <p>Input Impedance: Current, 20 ohms; Voltage, 1.1 Mohms</p> <p>Input Over-Range Protection: Current, $\pm 100\text{mA}$; Voltage, $\pm 30\text{Vdc}$</p>	<p>Communications</p> <p>Type: Standard MODBUS RTU protocol interface over RS-485 (parameters as specified in U.S. Standard EIA-RS485)</p> <p>Address Range: Configurable from 1 to 247. Unit will assume a MODBUS address of 1 by default.</p> <p>Baud Rates: Interface supports the following: 300, 600, 1200, 2400, 4800, 9600, 19.2k and 38.4k</p> <p>Character Format: One start bit, 8 data bits and one stop bit</p> <p>Parity: None, even or odd</p> <p>Indicators</p> <p>LED Type: INPUT LED: Dual color Red/Green LED, Red LED indicates input failure READY LED: Dual Color Red/Green LED, Green LED indicates unit is operating properly</p>	<p>Ambient Conditions</p> <p>Operating & Storage Range: -40°C to $+85^{\circ}\text{C}$ (-40°F to $+185^{\circ}\text{F}$)</p> <p>Relative Humidity: 0-95%, non-condensing</p> <p>Ambient Temperature Effect: Current, 2 microamps/$^{\circ}\text{C}$; Voltage, 1mV/$^{\circ}\text{C}$</p> <p>RFI/EMI Immunity: Tested per IEC61000-4-3 STANDARD UNIT: 10V/m@20-1000MHz, 1kHz AM WITH -RF OPTION: 20V/m@20-1000MHz, 1kHz AM</p> <p>Noise Rejection: Common mode: 100dB@50/60Hz; Normal Mode: Current Input, 100dB typical@50mA_{p-p}@50/60Hz; Voltage Input, 100dB typical@1V_{p-p}@50/60Hz</p> <p>Weight</p> <p>290 g (10.2 oz)</p>
--	--	---

Table 1. Long-Term Stability for HLPRG (mA and V) Input Model

Stability (% of maximum span)	Input Circuit (Years)		
	1	3	5
Current Inputs	0.081	0.14	0.18
Voltage Inputs	0.093	0.16	0.21

Table 2. Long-Term Stability for TPRG, 2TPRG (RTD, T/C, mV, Ohms, Pot) Input Model

Stability (% of maximum span)	Input Circuit (Years)		
	1	3	5
RTD, Ohm, & Pot Inputs	0.09	0.16	0.21
T/C & mV Inputs	0.08	0.14	0.18

Specifications (TPRG: RTD, T/C, mV, Ohms and Pot Input Model)

<p>Performance</p> <p>Input Accuracy: See Table 5</p> <p>Overall Accuracy: The overall accuracy of the unit is the input accuracy. It includes the combined effects of linearity, hysteresis, repeatability and adjustment resolution. It does not include ambient temperature effect. For T/C input, add the RJC error.</p> <p>Reference Junction Compensation Accuracy (T/C Inputs Only): ±0.65°C</p> <p>Stability: See Table 2</p> <p>Response Time: INPUT UPDATE TIME: 128msec; MODBUS POLLING TIME: Dependent upon how fast and how often a MODBUS master requests data</p> <p>Isolation: STANDARD UNIT: 1000Vrms between case and input. 500Vrms between input to MODBUS and power to MODBUS. 1500Vrms between power and input; WITH -RF OPTION: 500Vrms between case, input and power</p> <p>Power Supply: 9-30Vdc</p> <p>Power Consumption: 1W maximum</p> <p>Input Impedance:T/C and mV inputs, 40 Mohms, nominal</p> <p>Input Over-Range Protection: ±5Vdc</p> <p>Excitation Current (RTD and Ohm Inputs Only): 250 microamps, ±10%</p>	<p>Communications</p> <p>Type: Standard MODBUS RTU protocol interface over RS-485 (parameters as specified in U.S. Standard EIA-RS485)</p> <p>Address Range: Configurable from 1 to 247. Unit will assume a MODBUS address of 01 by default.</p> <p>Baud Rates: Interface supports the following: 300, 600, 1200, 2400, 4800, 9600, 19.2k and 38.4k</p> <p>Character Format: One start bit, 8 data bits and one stop bit</p> <p>Parity: None, even or odd</p> <p>Indicators</p> <p>LED Type: INPUT LED: Dual color Red/Green LED, Red LED indicates input failure READY LED: Dual Color Red/Green LED, Green LED indicates unit is operating properly</p>	<p>Ambient Conditions</p> <p>Operating & Storage Range: -40°C to +85°C (-40°F to +185°F)</p> <p>Effect of Ambient Temperature on Cold Junction Compensation (T/C Inputs Only): ±0.005°C per °C change of ambient temperature</p> <p>Relative Humidity: 0-95%, non-condensing</p> <p>Ambient Temperature Effect: See Table 4</p> <p>RFI/EMI Immunity Tested per IEC61000-4-3 STANDARD UNIT: 10V/m@20-1000MHz, 1kHz AM WITH -RF OPTION: 20V/m@20-1000MHz, 1kHz AM</p> <p>Noise Rejection: Common mode, 100dB@50/60Hz; Normal mode, refer to Table 3</p> <p>Weight 290 g (10.2 oz); 440g (15.6 oz) 2TPRG model</p>
---	---	---

Table 3. Normal Mode Rejection Ratio Table

Sensor Type	Max. p-p Voltage Injection for 100dB at 50/60Hz
T/C: J, K, N, C, E	150mV
T/C: T, R, S, B	80mV
Pt RTD: 100, 200, 300 ohms	250mV
Pt RTD: 400, 500, 1000 ohms	1V
Ni: 120 ohms	500mV
Cu: 9.03 ohms	100mV
Resistance	mV
1-4 kohms	1V
0.25-1 kohms	250-1000
0.125-0.25 kohms	62.5-250
	100mV

Table 4. Ambient Temperature Effect

Input Type	Accuracy per 1°C (1.8°F) change in Ambient
*RTD	0.0035°C
Ohm	0.002 ohms + 0.005% of reading
Thermocouples	
Input Type	Accuracy per 1°C (1.8°F) change in Ambient
J	0.00016°C + 0.005% of reading
K	0.0002°C + 0.005% of reading
E	0.00026°C + 0.005% of reading
T	0.0001°C + 0.005% of reading
R, S	0.00075°C + 0.005% of reading
B	0.0038°C + 0.005% of reading
N	0.0003°C + 0.005% of reading
C	0.00043°C + 0.005% of reading
mV	0.5 microvolts + 0.005% of reading

*Accuracy of Ni672 is 0.002°C

PC-Programmable MODBUS Temperature Transmitter and Signal Converter

Table 5. Accuracy with RTD, Thermocouple, mV, Ohms, and Pot Inputs (Models with TPRG and 2TPRG Input)

Input	Type	α	Ohms	Conformance Range	Input Accuracy/Repeatability	Maximum Range
RTD (2-, 3-, 4-Wire)	Platinum	0.003850	100	-200 to 850°C -328 to 1562°F	±0.1°C (±0.18°F)	-240 to 960°C -400 to 1760°F
			200			
			300			
			400			
			500			
			1000			
	0.003902	100	-100 to 650°C -148 to 1202°F			
		200				
		400				
		500				
1000						
0.003916	100	-200 to 510°C -328 to 950°F	-240 to 580°C -400 to 1076°F			
Nickel	0.00672	120	-80 to 320°C -112 to 608°F	-100 to 360°C -148 to 680°F		
Copper	0.00427	9.035	-50 to 250°C -58 to 482°F	±0.85°C (±1.53°F)	-65 to 280°C -85 to 536°F	
Ohms	Direct Resistance	n/a	0-4000	0-4000 ohms	±0.4 ohms	0-4095 ohms
	Potentiometer		4000 max.	0-100%	±0.1%	0-100%
T/C	J	n/a	n/a	-180 to 760°C -292 to 1400°F	±0.25°C (±0.45°F)	-210 to 770°C -346 to 1418°F
	K	n/a	n/a	-150 to 1370°C -238 to 2498°F	±0.30°C (±0.54°F)	-270 to 1390°C -454 to 2534°F
	E	n/a	n/a	-170 to 1000°C -274 to 1832°F	±0.20°C (±0.36°F)	-270 to 1013°C -454 to 1855.4°F
	T	n/a	n/a	-170 to 400°C -274 to 752°F	±0.25°C (±0.45°F)	-270 to 407°C -454 to 764.6°F
	R	n/a	n/a	0 to 1760°C 32 to 3200°F	±0.55°C (±0.99°F)	-50 to 1786°C -58 to 3246.8°F
	S	n/a	n/a	0 to 1760°C 32 to 3200°F	±0.55°C (±0.99°F)	-50 to 1786°C -58 to 3246.8°F
	B	n/a	n/a	400 to 1820°C 752 to 3308°F	±0.75°C (±1.35°F)	200 to 1836°C 392 to 3336.8°F
	N	n/a	n/a	-130 to 1300°C -202 to 2372°F	±0.40°C (±0.72°F)	-270 to 1316°C -454 to 2400.8°F
	C	n/a	n/a	0 to 2300°C 32 to 4172°F	±0.80°C (±1.44°F)	0 to 2338°C 32 to 4240.4°F
mV	mV	n/a	n/a	n/a	±15 microvolts	-50 to 1000mV

Ordering Information

Unit	Input	Output	Power	Options	Housing
TMZ PC-Programmable MODBUS Temperature Transmitter and Signal Converter	HLPRG Programs to accept: Current: Any range between 0-50mA including: 0-20mA 4-20mA 10-50mA Voltage: Any range between 0-10Vdc including: 0-5Vdc 1-5Vdc 0-10Vdc TPRG, 2TPRG Programs to accept (see Table 5 for details): RTD: 2-, 3-, and 4-wire; platinum, copper, and nickel Thermocouple: J, K, E, T, R, S, N, C, B Ohms: 0-4000 ohms (potentiometer, 4000 ohms maximum) Millivolts: -50 to +1000mV	MB MODBUS RTU (RS-485) communications	24DC	-RF Enhanced RFI/EMI protection (see "Specifications" for details)	DIN Universal DIN-style housing mounts on 32mm (EN50035) G-type and 35mm (EN50022) Top Hat DIN-rails (HLPRG and TPRG models only) 2TPRG model only mounts on 35mm (EN50022) Top Hat DIN-rail FLB Externally-mounted flange provides a secure mount and ensures resistance to vibration

When ordering, specify: Unit / Input / Output / Power / Options [Housing]
Model number example: TMZ / TPRG / MB / 24DC / -RF [DIN]

Accessories

Each TMZ order comes with one copy of our Windows Intelligent PC Configuration Software. Use the chart below to order additional parts.

Part Number 750-75E05-01	TMZ Intelligent PC Configuration Software (One copy provided free with each order)
Part Number 803-053-26	Non-Isolated Serial Configuration Cable
Part Number 804-030-26	Fuse Protected, Non-Isolated USB Communication Cable

All product names are the trademarks of their respective companies.

TMZ

PC-Programmable MODBUS Temperature Transmitter and Signal Converter

Figure 7. TMZ Installation Dimensions for HLPRG and TPRG Models

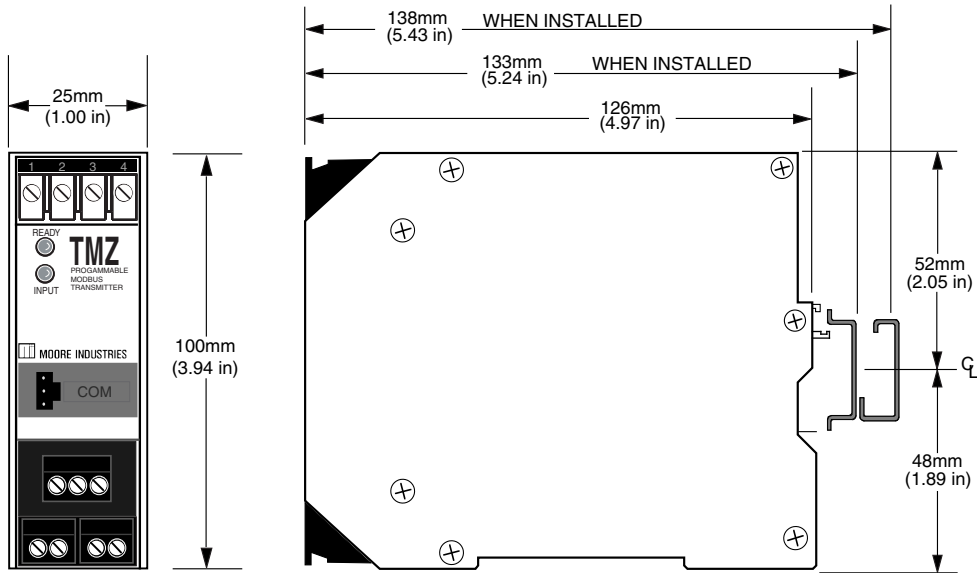
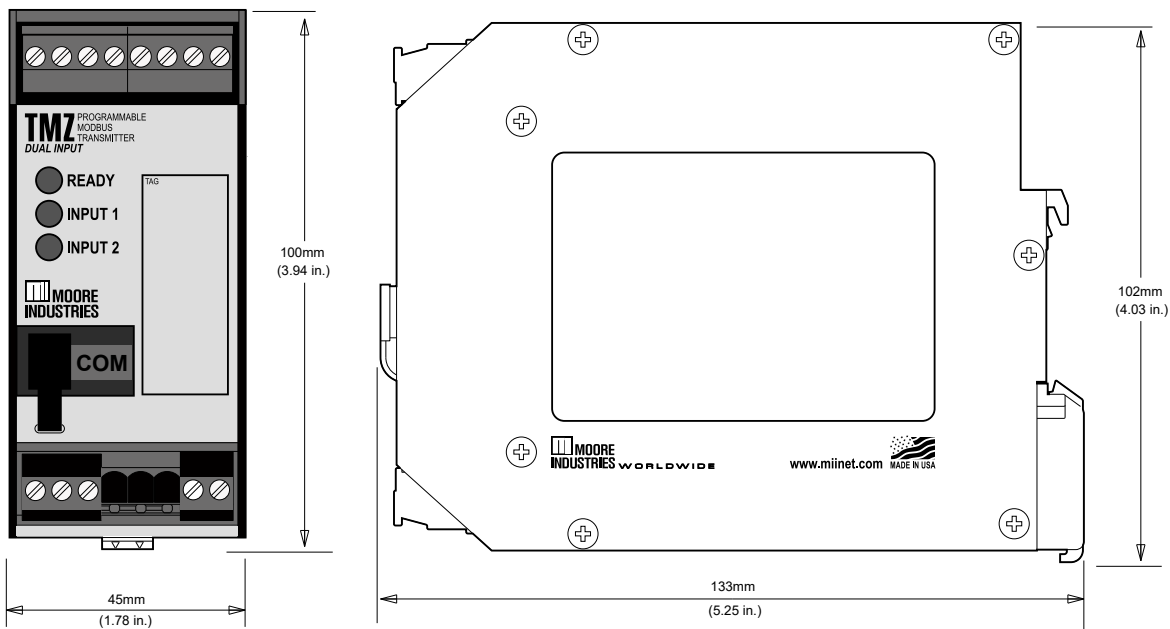


Figure 8. TMZ Installation Dimensions 2TPRG Model



Demand Moore Reliability • www.miinet.com

United States • info@miinet.com
Tel: (818) 894-7111 • FAX: (818) 891-2816
Australia • sales@mooreind.com.au
Tel: (02) 8536-7200 • FAX: (02) 9525-7296

Belgium • info@mooreind.be
Tel: 03/448.10.18 • FAX: 03/440.17.97
The Netherlands • sales@mooreind.nl
Tel: (0)344-617971 • FAX: (0)344-615920

China • dho@mooreind.sh.cn
Tel: 86-21-62491499 • FAX: 86-21-62490635
United Kingdom • sales@mooreind.com
Tel: 01293 514488 • FAX: 01293 536852