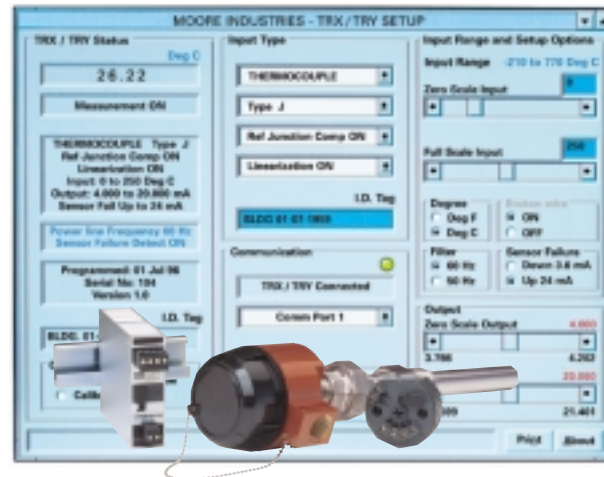


Temperature Transmitters and Assemblies

T7: Enhance Accuracy Using Transmitters

Problem: Our DCS measures the entire range of our temperature sensors. For our RTDs, that's a span of almost 1900°F when our range of interest is only 0-250°F. The DCS input card accuracy is calculated as a percent of the 1900°F span. How can I improve my accuracy numbers?

Solution: Our TRY Temperature Transmitter can be calibrated to any specific range. Since transmitter accuracy is a percentage of calibrated span, a tighter span means better accuracy. As the range narrows, the measurement accuracy improves.



You enter the zero and full scale range values for your application

Model Number Example

TRY / PRG / 4-20MA / 10-42DC [LH1NS]